

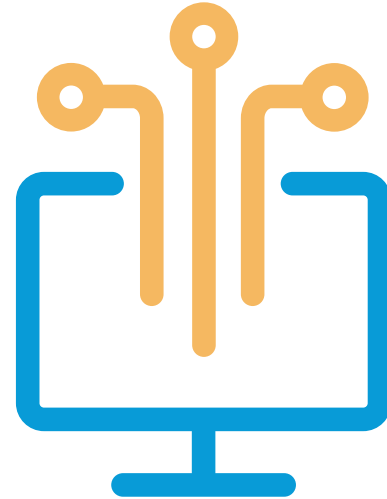
# MOTOR Shop Connect

## Market Insights & Analytics

Data integration between service providers and shop management systems.

MOTOR Shop Connect helps third-party software and service providers integrate with shops by providing an easy-to-install solution that enables detailed repair order data to flow freely to trusted partners via the cloud.

By supporting major aftermarket shop management systems, software and service providers may integrate shop systems efficiently and effectively providing immediate results. Join a growing network of more than 20,000 shops in the aftermarket by utilizing this industry-leading solution.



Insights include detailed vehicle service history such as service location, description and dates of service and repair, vehicle part details, manufacturer information and more.

Improve your business with MOTOR Shop Connect—powering incentive or rebate programs, vehicle history service, online scheduling applications and more!

### What's Included

- Base historical data set
- Delta updates as often as daily
- Service location
- Service history details
- Vehicle
- Formatted as XML, JSON, or Text via SFTP web services data feed

### Popular Uses

- Key performance indicators
- Vehicle service history
- Used vehicle valuations
- Supply chain analysis
- Benchmarking of service and parts volumes
- Incentive or rebate programs
- Online scheduling applications

## Product Features and Benefits

### Connected real-world service events

- View service details overnight from your community partners' service events

### Customer information

- PII excluded for ease of use

### Vehicle Identification

- Vehicle complete details including year, make model (YMM) and engine, when available
- VIN excluding serial number and check digit

### Totals in service & repair history

- Parts and materials totals
- Labor hours and complete job totals

### Service description

- Date of service and mileage at time of service
- Detailed description of service including labor hours and rates

### Parts Information

- Parts numbers and pricing used in vehicle repairs
- Part suppliers and brands of vehicle parts.



For product information or support, please contact us at 800-426-6867 or visit [WWW.MOTOR.COM](http://WWW.MOTOR.COM).